



Lavershot Hall, Windlesham

Offers in the region of £450,000.



Lavershot Hall, London Road, Windlesham

Unique, three bedroom split level apartment forming part of a stunning period building situated at the end of a long sweeping driveway between the villages of Windlesham and Sunningdale. The property is in need of refurbishment and benefits from having part of the roof which is currently used as a roof terrace, a garage and a share of the freehold.

FEATURES

- Refurbishment project
- Share of freehold
- Split level apartment
- Electric heating
- Long sweeping driveway
- Impressive entrance hall and communal areas

ACCOMODATION

- Kitchen
- Two reception rooms
- Three bedrooms
- Bathroom

OUTSIDE

- Residents parking to front of building
- Garage
- Steps onto area currently used as roof terrace
- Communal gardens

LEASE INFORMATION

- Share of freehold – Lease tbc
- Service charge - £2,750 per year

COUNCIL TAX

- Surrey Heath – Band D

EPC RATING

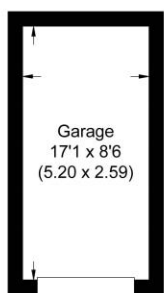
- F



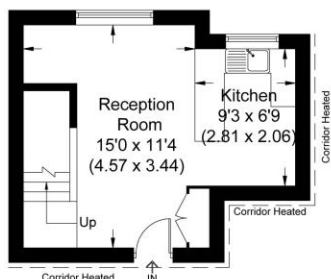


Lavershot Hall

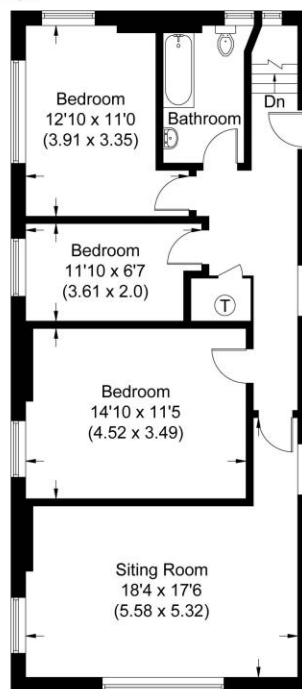
Approximate Gross Internal Area 96.80 sq m / 1041.94 sq ft
(Excluding Garage)
Garage Area 13.47 sq m / 144.98 sq ft



Garage



First Floor

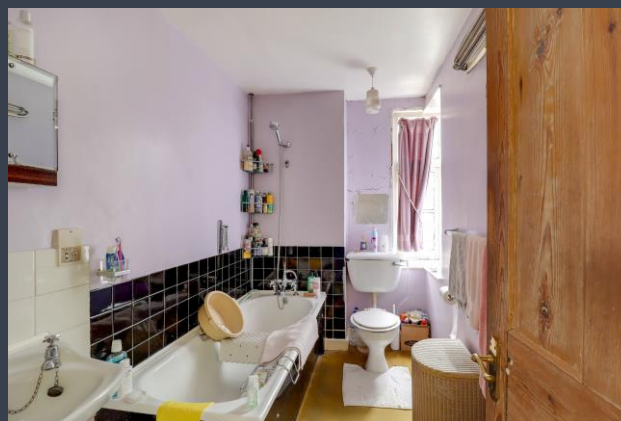


Second Floor

Illustration for identification purposes only,
measurements are approximate, not to scale.

Disclaimer: We wish to inform prospective purchasers that we have prepared these sales particulars as a general guide. We have not carried out a detailed survey, nor tested the services, appliances and specific fittings. Room sizes are approximate and rounded; they are taken between internal wall surfaces and therefore include cupboards / shelves, etc. Accordingly, they should not be relied upon for carpeting, curtains / blinds and kitchen equipment, whether fitted or not, are deemed removable by the vendor unless specifically itemized within these.

Postcode for sat nav: **GU20 6LE**



The Old Dairy, 7 Updown Hill, Windlesham, Surrey GU20 6AF
enquiries@newtonrowe.co.uk | 01276 986900